

## SKINS: paintings by Guzzo Pinc, Sep 12 - Oct 7, 2024



*Cultivar*, 2024  
Acrylic on jute, mounted on canvas  
50 x 44 inches

\$ 5,000



*Epidermis*, 2024  
Acrylic on jute, mounted on canvas  
48 x 36 inches

\$ 5,200



*Coagulate*, 2024  
Acrylic on jute, mounted on canvas  
50 x 44 inches

\$ 6,600



*Skins*, 2023  
Acrylic on jute, mounted on canvas  
50 x 44 inches

\$ 15,000



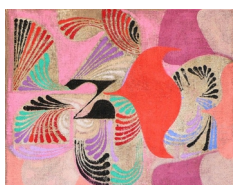
*Big Brother*, 2024  
Acrylic on jute, mounted on canvas  
50 x 44 inches

\$ 6,600



*Minocqua*, 2024  
Acrylic on jute, mounted on canvas  
30 x 24 inches

\$ 2,100



*L\_Oiseau*, 2023  
Acrylic on jute, mounted on canvas  
38 x 32 inches

\$ 3,600



*Other Side of the World, 2024*  
Acrylic on jute, mounted on canvas  
42 x 38 inches

\$ 5,000



*Please To Meet You, 2023*  
Rope, jute, felt, and paint on canvas  
38 x 38 inches

\$ 4,300



*Wolf Peach, 2024*  
Acrylic on jute, mounted on canvas  
42 x 38 inches

\$ 5,000

Mixing bold colors with graphic elements and representational figures, Wisconsin painter Guzzo Pinc creates dynamic abstract compositions that toe the line between abstraction and figuration. The artist manipulates the surface by sanding painted areas creating translucent effects that invite further study. Large swaths of flat, colorful shapes provide an exciting movement and tension, resulting in a visually striking body of work.

**Born in Chicago, Guzzo Pinc earned his MFA from the University of Wisconsin-Madison in 2020 and currently teaches at the University of Wisconsin-Madison.**

*Skin forms the threshold that separates our insides from our outsides. We are not only permeable objects, our very boundaries are unclear. We breathe in the wind, absorb the sun, digest other animals and plants, and it all becomes part of us... just as we lose water, shed skin, and leave waste. What 'we' are is in constant flux. From a higher perspective, we are simply a fingerprint of the ocean, the toe of a mountain, a fingernail of the sun.*

*My current series of paintings is a meditation on the themes of permeability and individuation. Through a focus on the human body I explore how one thing becomes another, how identity fluctuates in time.*

*In Wisconsin, life is dominated by the expansive forests that connect everything and the water that saturates our landscape. Our consciousness is filled with lush growth, overpowering gardens, alien weeds, muddy fingernails, titanic humidity, midnight paddles, devouring mosquitoes. We are not seekers in the desert or conquerors of mountains. We do not partake in the magnificent black and white tragedies of the city. Rather, we live within the blue and green mysteries of the earth. As such, we understand the mysteries of the skin.*